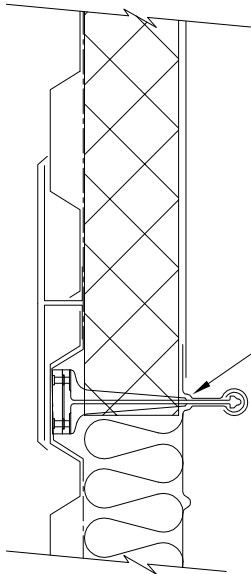


NOTE:
ALL COMBUSTIBLE MATERIAL ARE TO BE REMOVED FROM THE VICINITY OF THE JOINT TO ENSURE THAT THERE WILL BE NO FIRE RISK DUE TO SITE WELDING

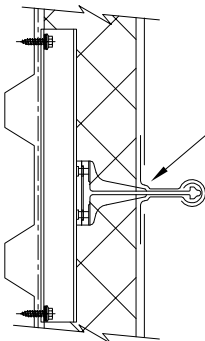
STANDARD RIDGE
DETAIL

TAPERED FLASHING PANEL LAPPED OVER
CUT DOWN KALZIP SHEET & FULLY WELDED



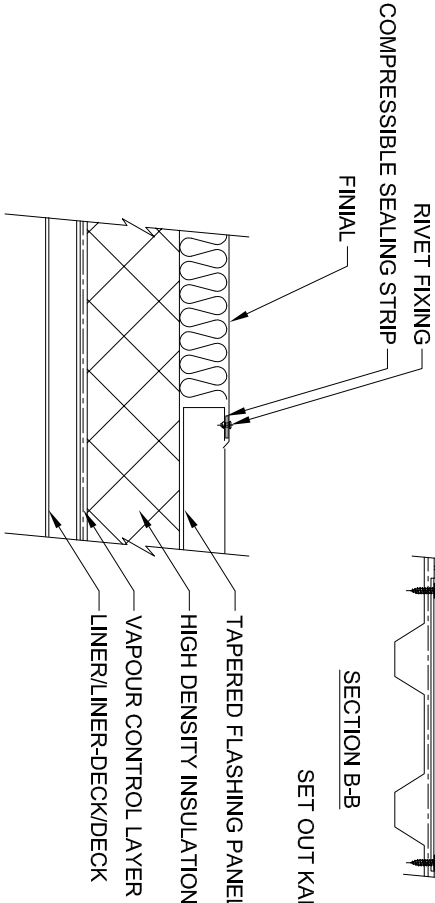
SECTION A-A

TAPERED FLASHING PANEL LAPPED OVER
CUT DOWN KALZIP SHEET & FULLY WELDED



SECTION B-B

SET OUT KALZIP SHEETS ON C/L OF CONICAL
AREA & LAY ON RADIAL LINES IN
BOTH DIRECTIONS



SECTION C-C

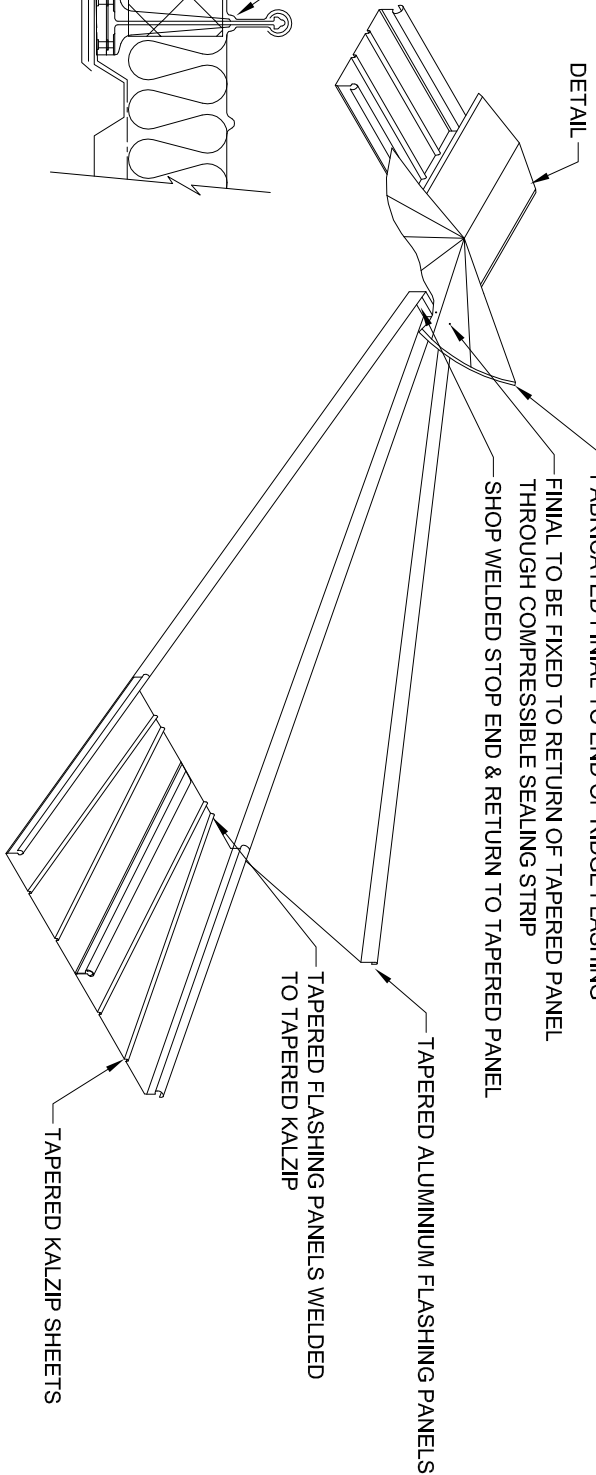
FABRICATED FINIAL TO END OF RIDGE FLASHING

FINIAL TO BE FIXED TO RETURN OF TAPERED PANEL
THROUGH COMPRESSIBLE SEALING STRIP

SHOP WELDED STOP END & RETURN TO TAPERED PANEL

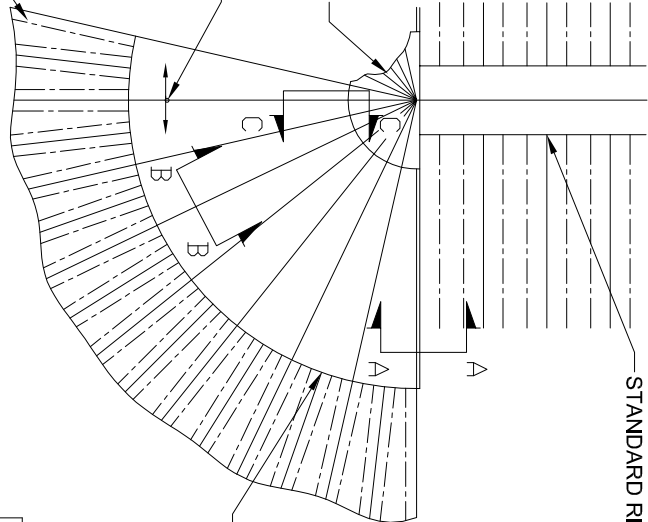
TAPERED ALUMINIUM FLASHING PANELS

TAPERED FLASHING PANELS WELDED
TO TAPERED KALZIP



STANDARD RIDGE FLASHING

TAPERED FLASHING PANELS
WELDED TO TAPERED KALZIP



PLAN VIEW

1. All Dims in mm Unless Otherwise Stated
2. Do Not Scale From This Drawing
3. Isolate All Dissimilar Materials With Barrier Tape
4. If in Doubt, ASK



A Tata Steel Enterprise

Kalzip Ltd
Haydock Lane, Haydock, St. Helens
MERSEYSIDE, WA11 9TY
Tel: 01942 717072 Fax: 01942 715713
This drawing is copyright and is issued on the express condition
that it is not to be copied or disclosed by or to any unauthorised
person or firms without prior consent in writing from Kalzip.

Project:	Kalzip Standard Details			
Client:	Kalzip Ltd			
Title:	Tapered Roof Apex Detail			
Scale:	Date:	Drawn:	Checked:	
NTS	13.01.06	KRT		
Dwg No.	KZ-0-MISC-K-12-002		Rev:	
			A	