

Kalzip Walkway System Safety Plus

Highest security through collective protection!

The Kalzip roof walkway Safety Plus with handrails ensures that all users can move freely and safely on a slip-resistant surface. Tests of the entire construction and in particular the fixing to the Kalzip standing seam profiled sheets ensure that the function and durability of the Kalzip roof cladding is maintained. The Safety Plus roof walkway system can be used on all Kalzip profile types and roofs.

Product data sheet 01/2020

Areas of application:

Kalzip Maintenance Walkways
according to DIN EN 516 (class 1, type C)

Kalzip escape routes according to DIN 14094-2 (fire brigade)

Width: 500 mm or 800 mm

Grilles with anti-slip protection R11, if required with tread strips. Includes tilt adjustment to adapt the roof pitch and fixing clamps for penetration-free mounting on Kalzip profiled sheets.

Material/Surface: Natural aluminium

Kalzip Safety Railing Safety Plus
according to DIN EN 14122-3

Height: 1.10m, with handrail, knee and foot rail (height 100mm). Roof walkways can be built with railings on one side, on both sides or without railings.

Material/Surface: Natural aluminium



Advantages of the product

- Tested system for more safety during maintenance work or in case of fire
- Wide and slip-resistant grilles on a stable substructure
- Durability of the construction due to the choice of materials: aluminium, fasteners in stainless steel
- No leakage due to non-penetrating mounting
- Available with and without railing
- Retrofitting of railings is possible
- Prefabricated railing elements for quick mounting
- Flexible use due to non-directional installation on all Kalzip standing seam roofs

Application:

- Horizontal walkway, parallel to the eaves
For roof pitches $1.5^\circ \leq \alpha \leq 45^\circ$
 - Inclined path, from eaves towards ridge:
For roof pitches $1.5^\circ \leq \alpha \leq 20^\circ$
- From a roof pitch of 11° , the system is equipped with tread strips according to DIN 4426

Fixing clip type FA 80

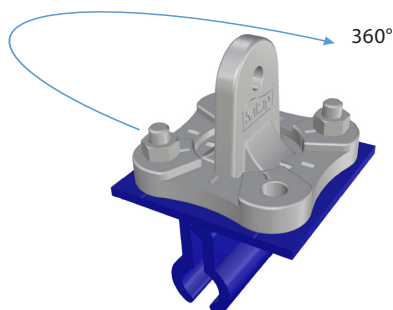
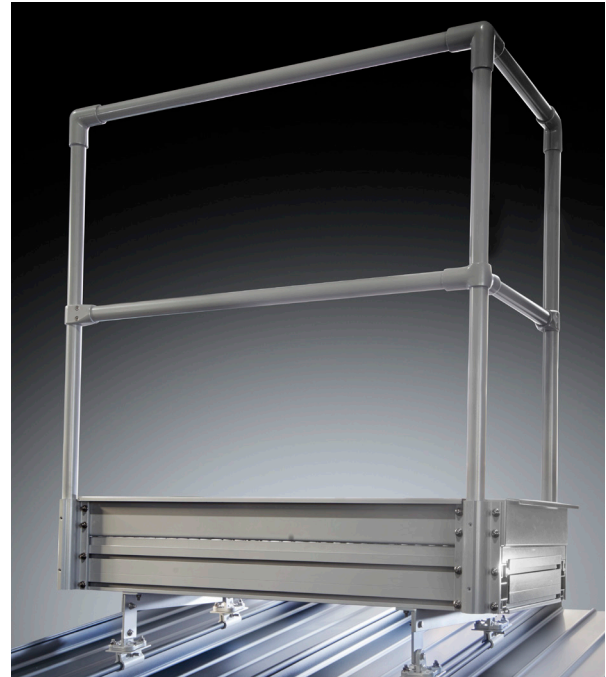
Provides penetration-free fixing to Kalzip profiled sheets.

Variant 1 with T-holder:

Standard on-roof mounting applications for parallel or right-angled roof walkways on Kalzip profiled sheets.

Variant 2 Kalzip rotating holder 360°:

Arrangement of roof paths diagonally over Kalzip profiled panels and for conical or free-form profiled sheets.



Fastening clamp type FA 80 with rotary holder



Kalzip GmbH
August-Horch-Str. 20-22 · D-56070 Koblenz
PO Box 10 03 16 · D-56033 Koblenz
T 02 61 - 98 34-0 · F 02 61 - 98 34-100
germany@kalzip.com
www.kalzip.com

Kalzip is a registered trademark.
While care has been taken to ensure that the information contained in this publication is accurate, neither Kalzip GmbH, nor its agents, accept responsibility or liability for errors or for information which is found to be misleading. Before using products or services supplied or manufactured by Kalzip GmbH, customers should satisfy themselves as to their suitability.

Copyright ©2020
Kalzip GmbH