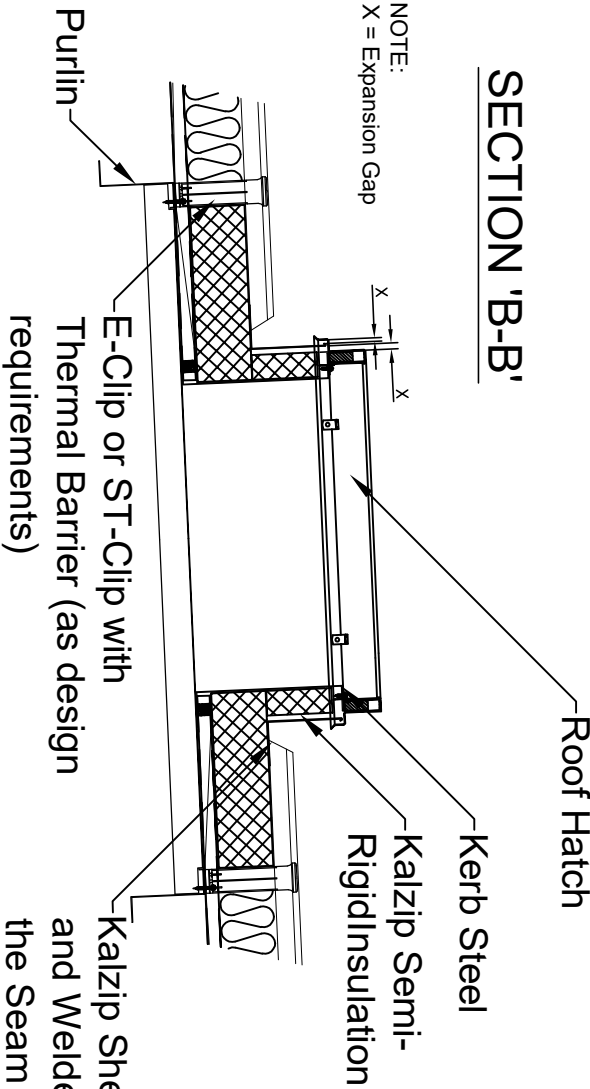


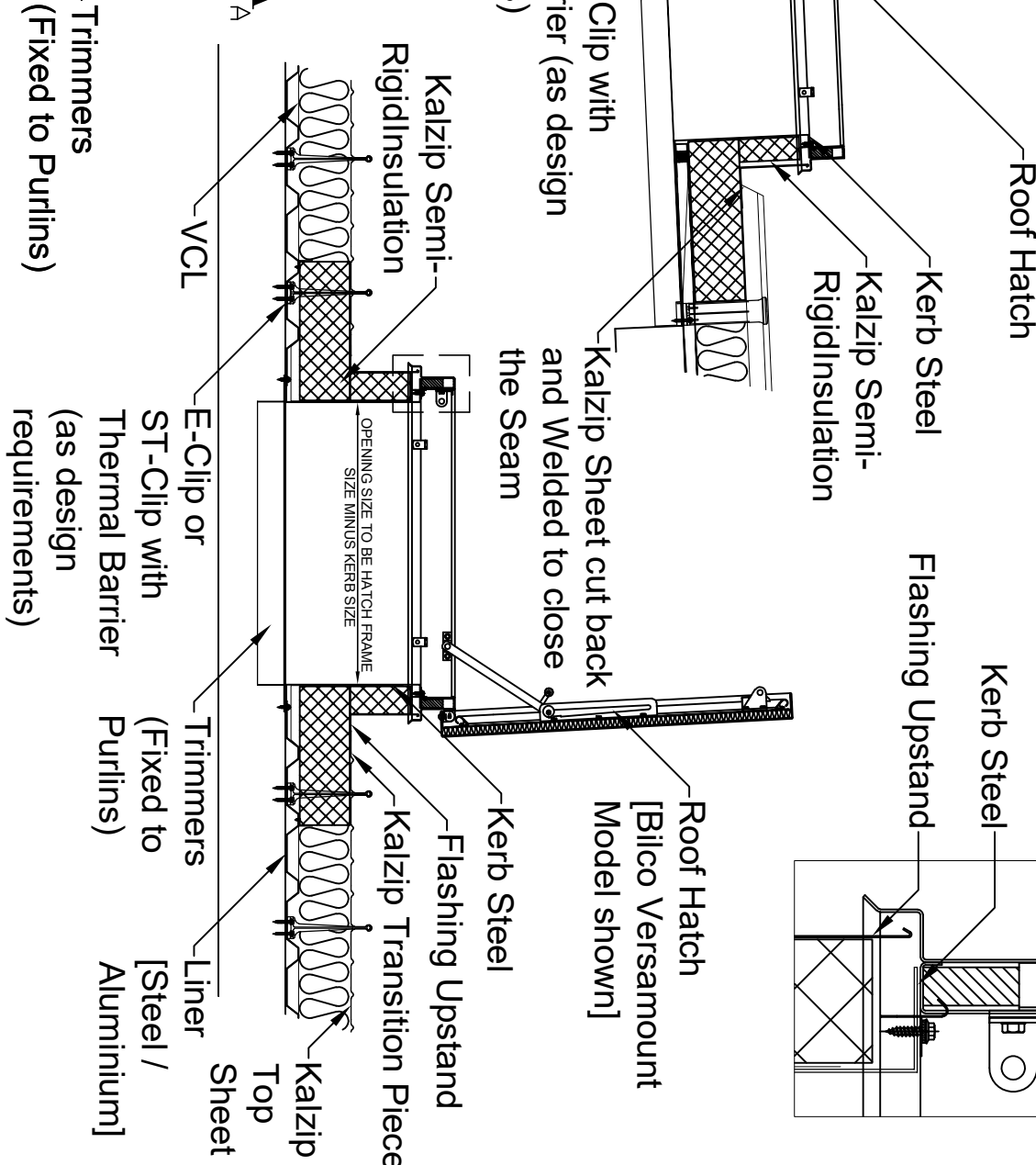
NOTE:
All combustible materials are to be removed from the vicinity of the joint to ensure that there will be no fire risk due to site welding.

SECTION 'B-B'

NOTE:
X = Expansion Gap



Roof Hatch fixed to Kerb Steel using Anchor Clip



PLAN
(Roof Hatch omitted for clarity)

SECTION 'A-A'

- Notes
1. All Dims in mm Unless Otherwise Stated
 2. Do Not Scale From This Drawing
 3. Isolate All Dissimilar Materials With Barrier Tape
 4. If in Doubt, ASK

Revision	Drawn	CHKD	Date	Colour Scheme and Layout
B	JPK	-	10-08-12	



Kalzip Ltd
Haydock Lane, Haydock, St. Helens
MERSEYSIDE, WA11 9TY
Tel: 01942 295 500
Fax: 01942 295 508

This drawing is copyright and is issued on the express condition that it is not to be copied or disclosed by or to any unauthorised person or firms without prior consent in writing from Kalzip.

Project: Kalzip			
Client: Kalzip Ltd			
Title: Double Skin Welded Soaker with Roof Hatch			
Scale: NTS	Date: 29-06-06	Drawn: KRT	Checked: -
Dwg No. KZ-0-RH-B-34-001			Rev: B

FOR GUIDANCE ONLY