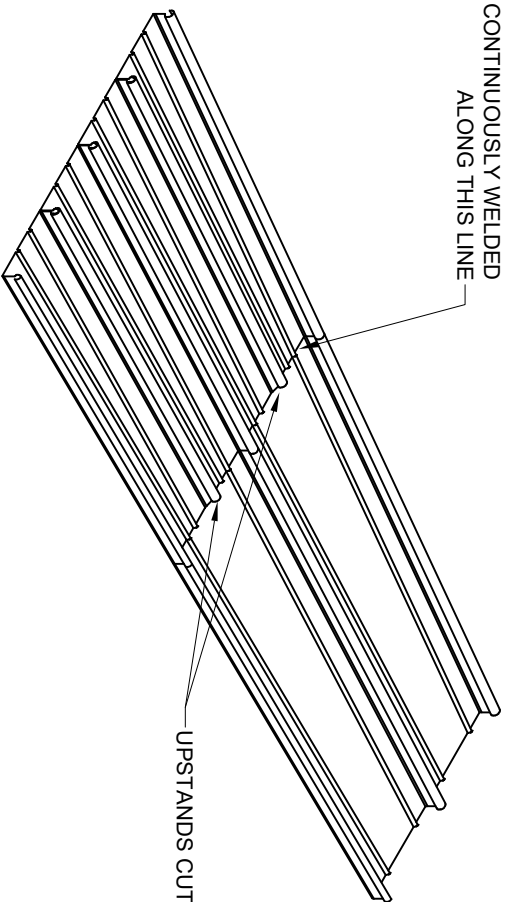


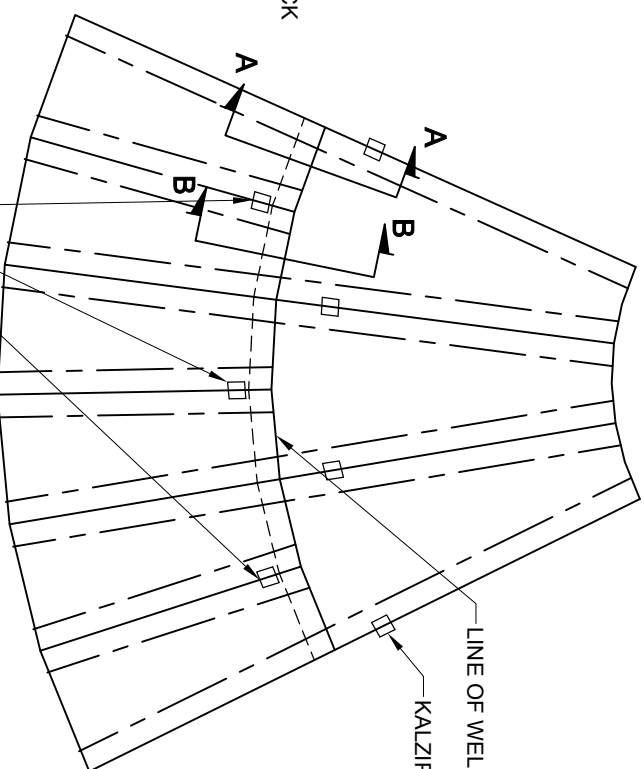
OVERLAPPED SHEETS  
CONTINUOUSLY WELDED  
ALONG THIS LINE



ISOMETRIC VIEW

NOTE:  
ALL COMBUSTIBLE MATERIALS ARE TO BE  
REMOVED FROM THE VICINITY OF THE  
JOINT TO ENSURE THAT THERE WILL BE NO  
FIRE RISK DUE TO SITE WELDING

UPSTANDS CUT BACK



PLAN VIEW

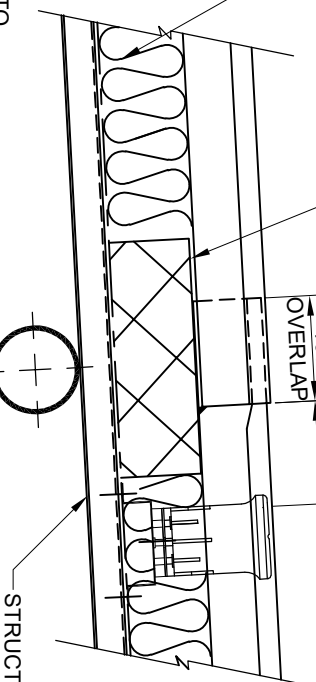
ST. CLIP MAY BE REQUIRED IN  
THIS LOCATION TO PREVENT  
SHEETS FROM LIFTING DEPENDING  
ON FIXING FREQUENCY

UPSTANDS CUT BACK AND  
WELDED TO CLOSE SEAM  
(SEE NOTE)

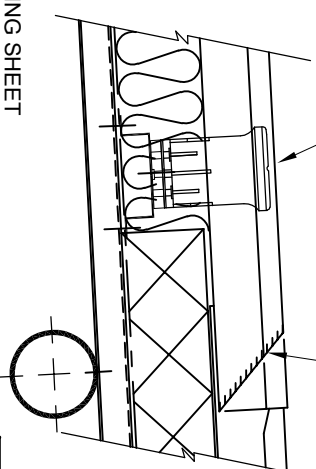
HIGH DENSITY KALZIP INSULATION

KALZIP INSULATION

100  
OVERLAP  
100



SECTION 'A-A'



SECTION 'B-B'

- NOTES:
- FOR TECHNICAL INFORMATION  
REGARDING TAPERED SHEETS REFER TO  
TIS-4-01
  - FOR TYPICAL WELDED LAP DETAIL REFER  
TO MISC-0-03

NOTE:  
STRUCTURE SHOWN AS INDICATIVE. ACTUAL  
SUPPORT/CONSTRUCTION WILL BE DEPENDANT UPON  
INDIVIDUAL PROJECT REQUIREMENTS

- All Dims in mm Unless Otherwise Stated
- Do Not Scale From This Drawing
- Isolate All Dissimilar Materials With Barrier Tape
- If In Doubt, ASK



Kalzip Ltd  
Haydock Lane, Haydock, St. Helens  
MERSEYSIDE, WA11 9TY  
Tel: 01942 717072 Fax: 01942 715713  
This drawing is copyright and is issued on the express condition  
that it is not to be copied or disclosed by or to any unauthorised  
person or firms without prior consent in writing from Kalzip.

Project:		Kalzip Standard Details	
Client:		Kalzip Ltd	
Title:		Kalzip Transverse Joint Detail 2 sheets Tapered to 1	
Scale:	Date:	Drawn:	Checked:
NTS	20.07.05	KRT	
Dwg No.	KZ-0-MISC-K-8-005		Rev: C