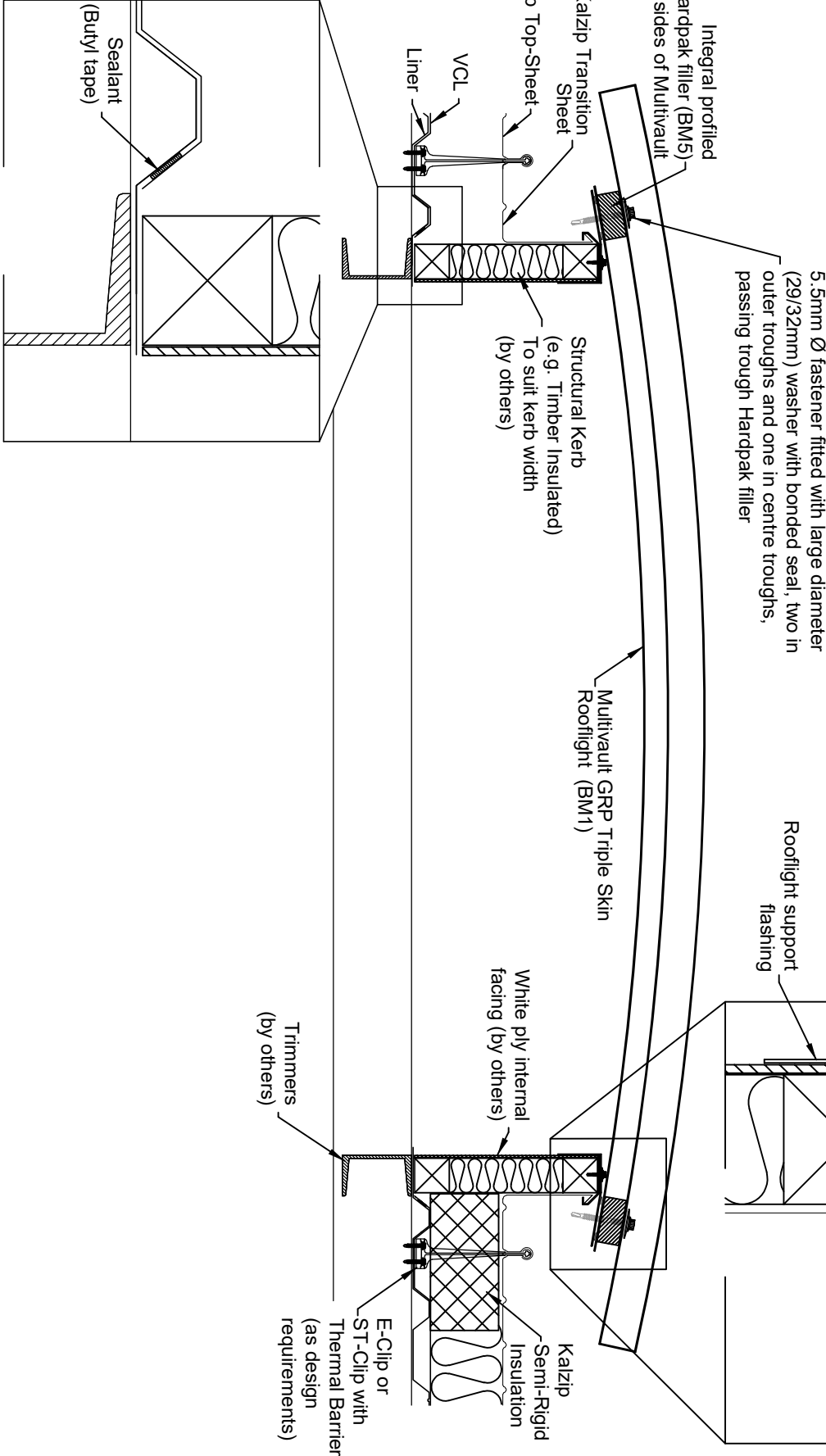


NOTE.

For minimum and maximum overhangs of Kalzip sheet from the ridge clip, refer to Kalzip's Standard Details. Ensure that the V.C.L. is adequately sealed using correct sealants prior to laying insulants.

Semi-Rigid Insulation recommended to support Weld Positions. Omitted for clarity.



Notes

1. All Dims in mm Unless Otherwise Stated
2. Do Not Scale From This Drawing
3. Isolate All Dissimilar Materials With Barrier Tape
4. If in Doubt, ASK

Revision	Drawn	CHKD	Date	Colour Scheme, References	Description
B	JPK	-	10-08-12		



Kalzip Ltd
Haydock Lane, Haydock, St. Helens
MERSEYSIDE, WA11 9TY
Tel: 01942 295 500
Fax: 01942 295 508

This drawing is copyright and is issued on the express condition that it is not to be copied or disclosed by or to any unauthorised person or firms without prior consent in writing from Kalzip.

Project: Kalzip Standard Details

Client: Kalzip Ltd

Title: Kalzip Multivault GRP Rooflight
Cross-Section

Scale: NTS	Date: 25.05.12	Drawn: JW	Checked: -
Dwg No. KLMVGRP-A-01			Rev: B